

30x30 CALIFORNIA

Responding to the Climate Crisis: The Movement to Protect Nature
and Restore Nature Across California

Contra Costa Special Districts Association Meeting
November 20, 2023

Dr. Ana M. Alvarez, Deputy General Manager
aalvarez@ebparks.org

DISAPPEARING NATURAL WORLD



Disappearing Natural World	Resiliency from Nature	Effects from a Health Perspective	Effects from a Social Justice Perspective
More extreme temperatures	Shade provides lower ambient temperatures and respite from heat	Heat stress, cardiovascular failure	Disproportionate impacts on low income, people of color, elderly
Sea level rise\Saline intrusion	Native plant materials buffering beaches, marshes and estuaries	Injuries, fatalities	Displacement of local businesses / agriculture and fishing
Stronger hurricanes and storm surges	Slow down water, storm surges; clean and filter storm water; capture and regenerate ground water	Injuries, fatalities	High percent of at risk communities reside on shoreline
Increased ozone concentrations and diminished air quality	Sequester carbon from air; filter air pollutants to improve air quality	Asthma, respiratory disease, heart disease Respiratory disease	Compounds risk of vulnerable communities / heat islands
Increased precipitation and flooding	Regional and urban parks mitigate local precipitation anomalies amplified by the urban heat island effect	Cholera, camphylobacter cryptosporidiosis	Lack of insurance / unsustainable in design, erosion / contamination of water that kids play in
Increased droughts and water scarcity, water contamination	Bioretention and flood plains to filter water pollutants	Salmonella, shigella Malnutrition, diarrhea, food insecurity	Lack of food access, gardens become too costly, food costs increase



THE FUTURE OF CONSERVATION

30x30 Conservation a Global Movement

Global conservation movement to protect 30% of the Earth's lands and waters by 2030

- 72 countries = survival of species
- Urgency to "keep up" with environmental challenges due to the loss of the natural world and its life supporting systems
- Movement against time to protect natural areas and natural resources



Vasco Caves
Regional Preserve

In October 2020, Governor Newsom issued the Nature-Based Solutions Executive Order N-8220, advancing biodiversity conservation as an administration priority and elevating the role of nature in the fight against climate change. As part of this Executive Order, California committed to the goal of conserving 30% of our lands and coastal waters by 2030 (30x30).

Bay Point Regional Shoreline

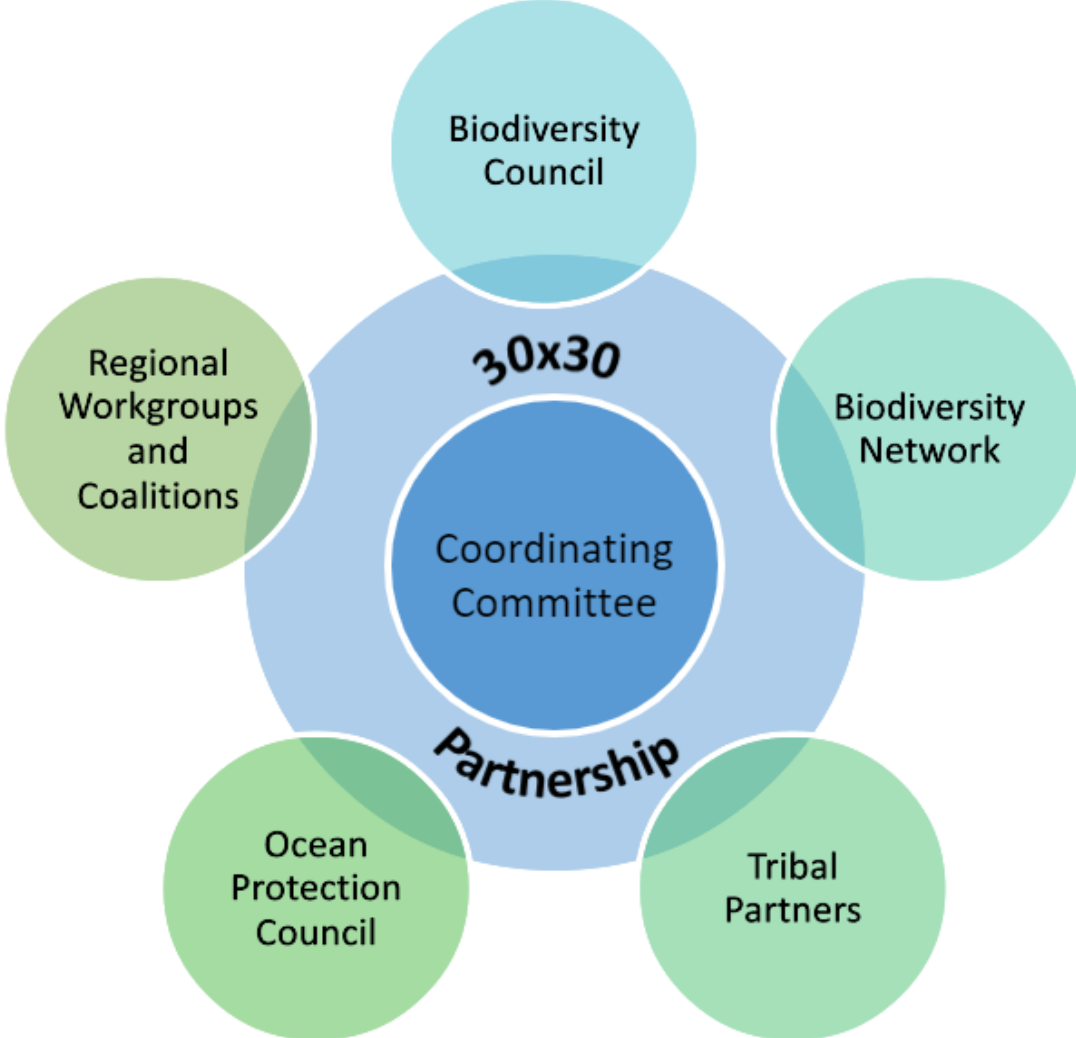
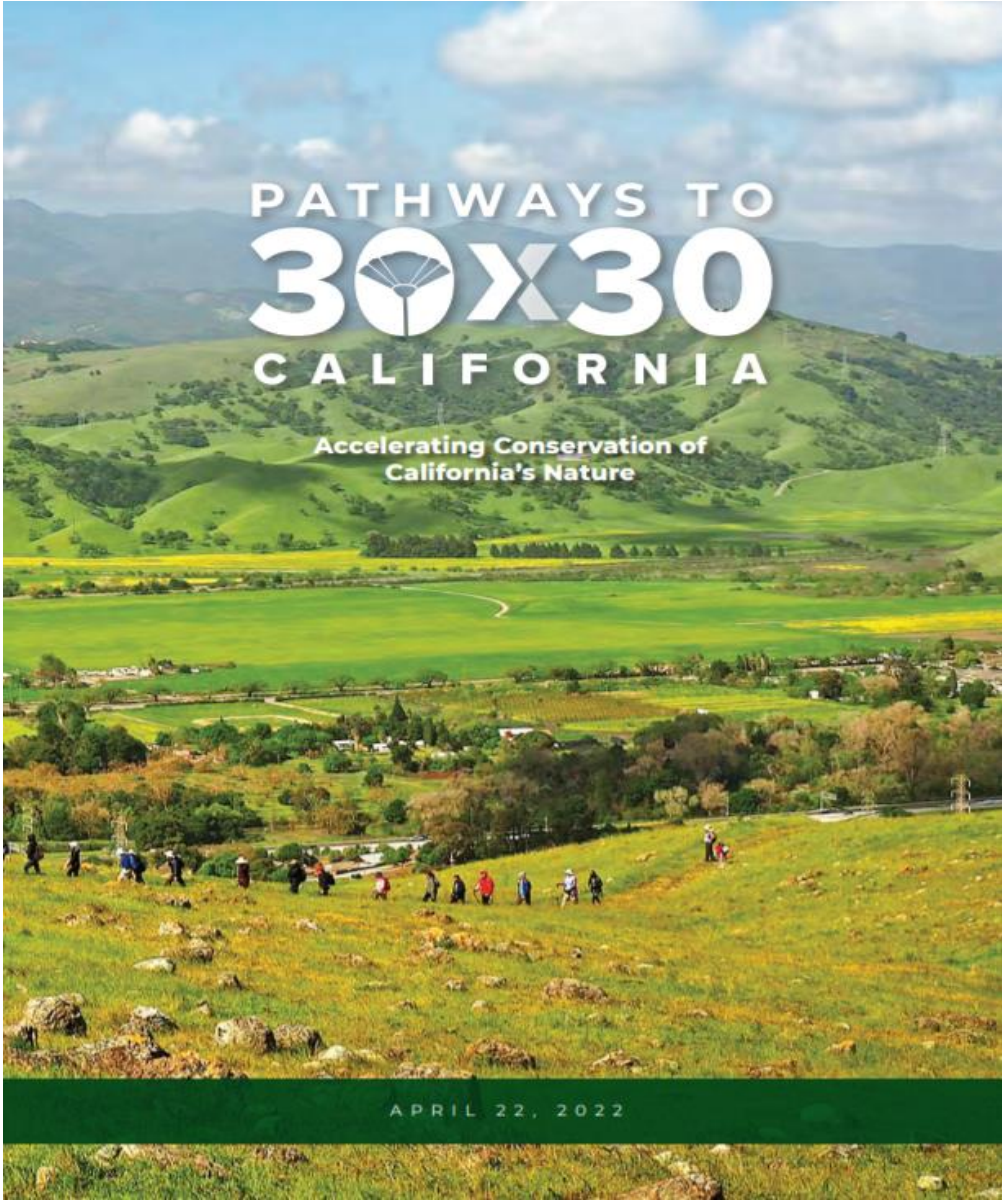


Federal Action

- President Biden signed Executive Order 14008 on January 27, 2021, addressing the climate and extinction crisis
- Calls on the protection of 30% of the U.S. lands and waters by 2030
- Brings together multiple policy issues areas including public health, food supplies, biodiversity and equity.
- Conserving & Restoring America the Beautiful Principles for Locally Led Effort:



Pathways to 30x30



30x30 Conservation Framework

- Key Objectives

1. Protect and restore biodiversity
2. Expand equitable access to nature
3. Mitigate and build resilience to climate change through climate-smart land management

- Core Commitments

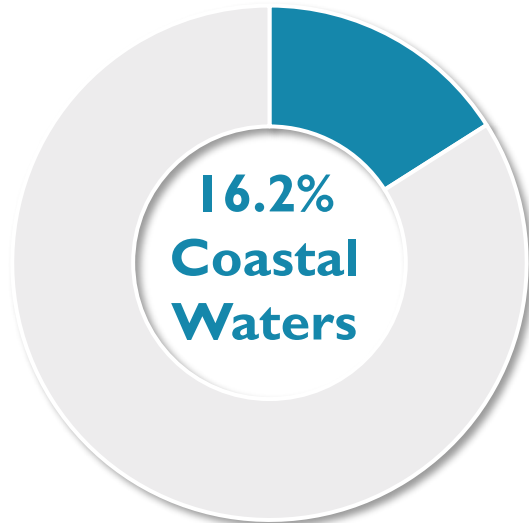
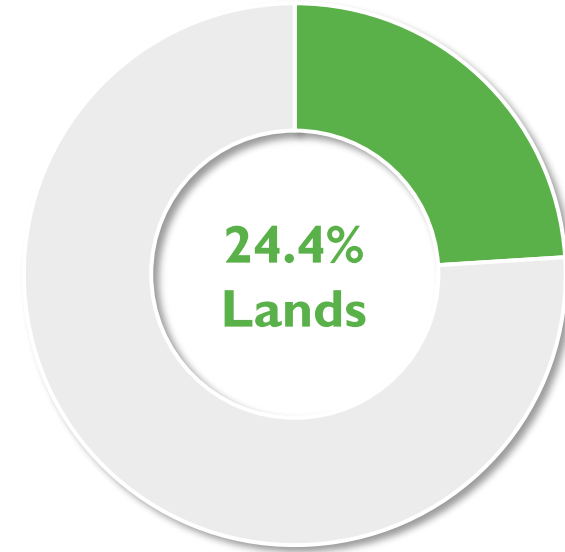
1. Advance justice, equity, diversity and inclusion
2. Strengthen Tribal Partnerships
3. Protect our economic prosperity, clean energy resources, and food supply



Statewide Progress

Conservation Areas

“Land and coastal waters areas that are **durably** protected and managed to sustain functional ecosystems, both intact and restored, and the diversity of life that they support”



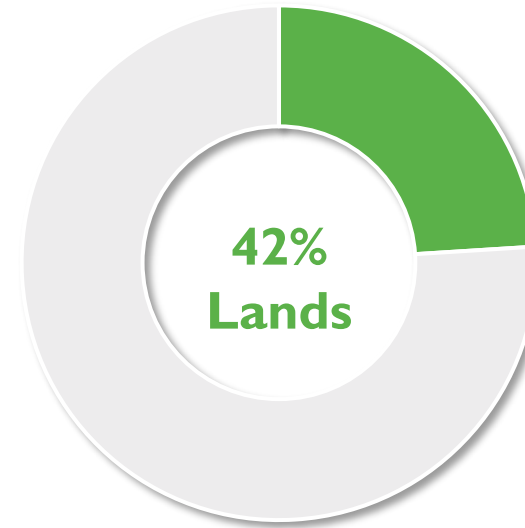
East Bay Regional Park District Lands



What Counts?

- Dedicated conservation areas
- Recreation lands and open spaces
- Working lands
- Marine Protected Areas

*All conservation is important!



Coming Soon

INDIGENOUS CO-STEWARDSHIP OF PUBLIC LANDS: LESSONS FOR THE FUTURE

FEBRUARY 21-22, 2024

GRATON RESORT & CASINO- ROHNERT PARK, CA

Join the convening of Tribal leaders, Indigenous culture bearers and public land management agencies from U.S., Canada, and Mexico

- Learn about substantive, long-term co-stewardship agreements
- Hear from proven communities of practice about co-management models
- Visit Point Reyes National Seashore, Tolay Lake Regional Park and Bodega Marine Laboratory on the traditional lands of the Coast Miwok and Southern Pomo People

INVITED REPRESENTATIVES: TRIBAL LEADERS & INDIGENOUS CULTURE BEARERS

- Bureau of Land Management
- California Fish and Wildlife
- California State Parks
- National Park Service
- The Nature Conservancy
- UC Natural Reserve System
- US Fish and Wildlife Service
- US Forest Service

INVITED SPEAKER: SECRETARY OF INTERIOR DEB HAALAND

A California Biodiversity Network Initiative Funded By:

Federated Indians of Graton Rancheria,
Gordon & Betty Moore Foundation, and Resource Legacy Fund

Berkeley Institute for Parks,
People, and Biodiversity



HOSTED BY:

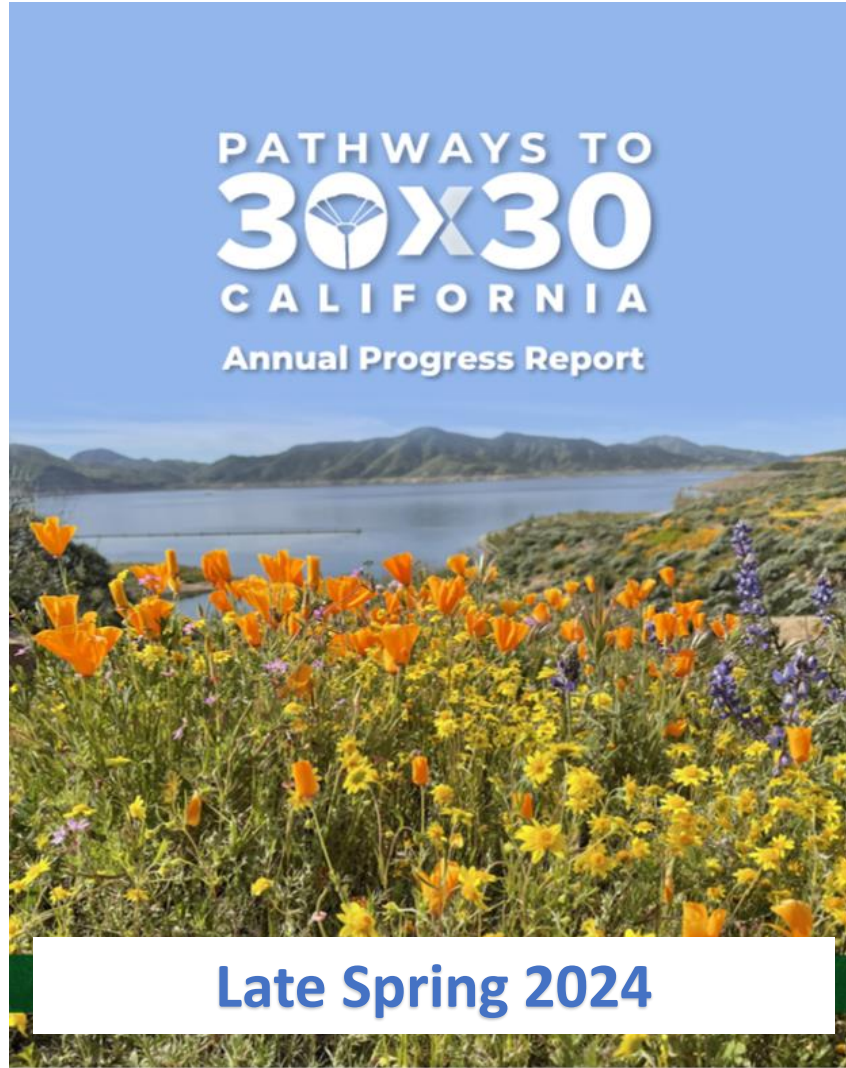


East Bay
Regional Park District
Healthy Parks. Healthy People.



For more information, please visit cabiodiversitynetwork.org

PATHWAYS TO 30X30 CALIFORNIA Annual Progress Report



Late Spring 2024

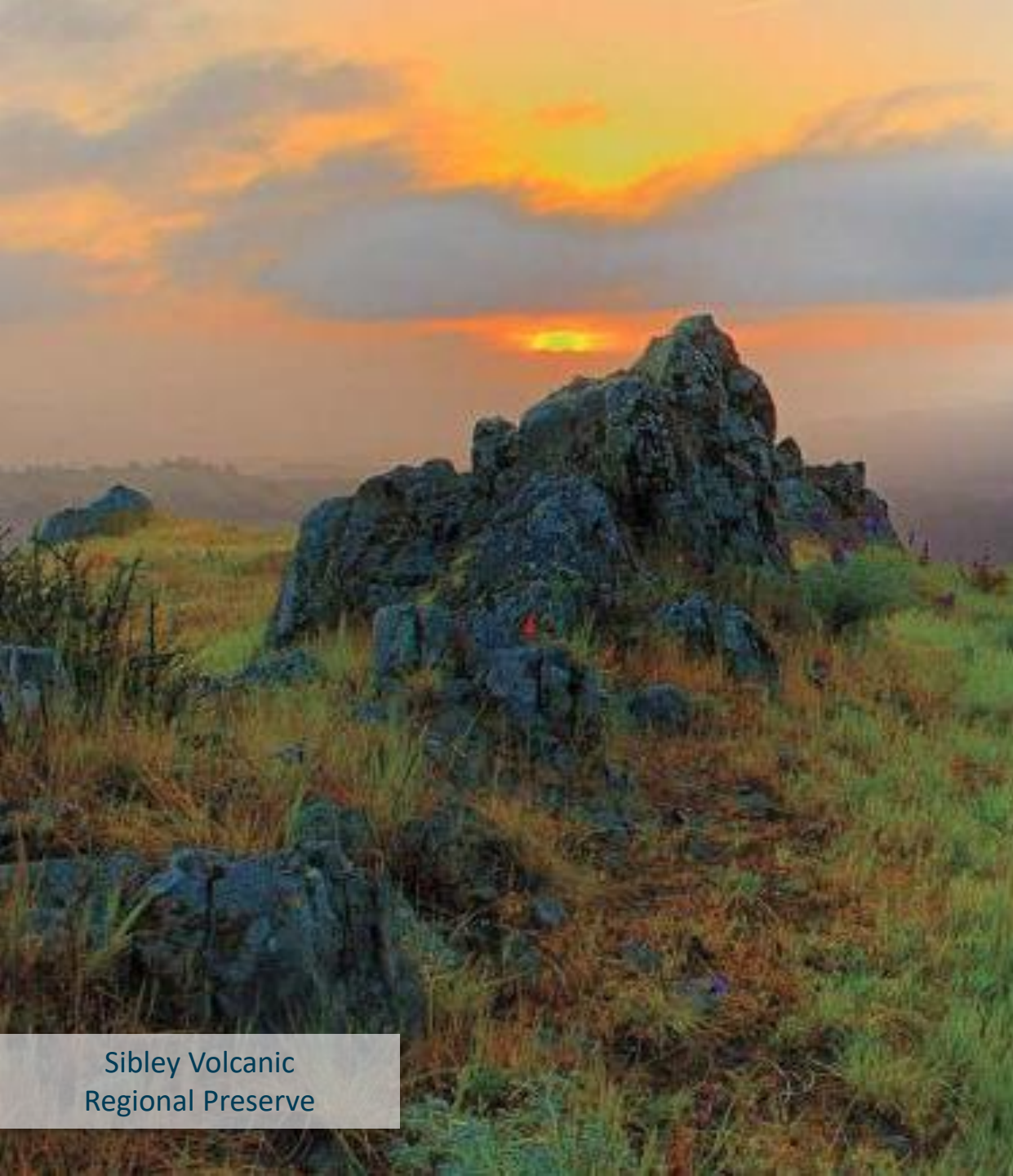
For More Information:

Californianature.ca.gov

Cabiodiversitynetwork.org

Togetherbayarea.org





THE AUDACIOUS IS NOT ONLY **POSSIBLE,** BUT *NECESSARY.*

- California Natural Resources Secretary
Wade Crowfoot

Sibley Volcanic
Regional Preserve

30x30
CALIFORNIA

East Bay 
Regional Park District

30x30 CALIFORNIA

Responding to the Climate Crisis: The Movement to Protect Nature
and Restore Nature Across California

Contra Costa Special Districts Association Meeting
November 20, 2023

Dr. Ana M. Alvarez, Deputy General Manager
aalvarez@ebparks.org